

MV-8800 Production Studio



Working with External MIDI Instruments

© 2007 Roland Corporation U.S.

All rights reserved. No part of this publication may be reproduced in any form without the written permission of Roland Corporation U.S.

MV8800WS11

About the MV-8800 Workshop Series

Roland's MV-8800 Production Studio is packed with features for making music. It's a heavy-duty sampler that can do all sorts of things with sounds you sample or import. Its sequencer has 136 tracks for MIDI sequencing and playing back audio, and its set of editing tools is deep. It's a great box for performing—using its pads or an attached MIDI keyboard—and, of course, it can even burn a CD of your final master mix.

Each MV-8800 Workshop Series booklet focuses on one MV-8800 topic, and is intended as a companion to your *MV-8800 Owner's Manuals*.

About This Booklet

The MV-8800 can act as the command center of a MIDI studio. This booklet explains how to play MIDI instruments—including computer-based soft synths—from the MV-8800's pads, as well as how to use MIDI sounds in your MV-8800 sequences.

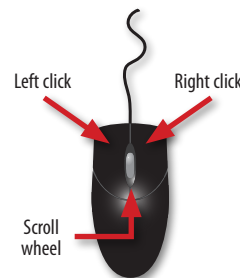
The Buttons, the LCD, or a VGA?

On the MV-8800, you can work on the built-in LCD or on an optional color VGA monitor. You can use the MV-8800's front-panel controls, or a mouse on your VGA screen. No matter how you like to work, there's an easy way to get things done.

Probably the best idea is to work primarily with a mouse on a VGA, using the MV-8800's buttons to quickly get in and out of MV-8800 screens. The procedures in this booklet typically assume you'll be working this way.

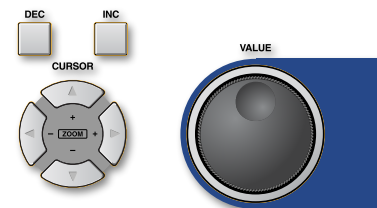
If you're not, don't worry, because the VGA windows and LCD screens are essentially the same. There are clickable VGA icons for all of the MV-8800's buttons. You can also press an onscreen button by clicking your mouse or by pressing an F button on the MV-8800. The main difference has to do with how you deal with settings—or "parameters"—and how you select objects.

If you're using a mouse:



You select parameters and objects with a left click. You change the selected parameter's value by turning the scroll wheel. You can display an object's menu by right-clicking the object.

If you're using the MV-8800's buttons:



You select parameters and objects with the ◀, ▶, ▲, and ▼ CURSOR buttons. Change a selected parameter's value by turning the VALUE dial or by pressing DEC and INC.

Understanding the Symbols in This Booklet

Throughout this booklet, you'll come across information that deserves special attention—that's the reason it's labeled with one of the following symbols.



A note is something that adds information about the topic at hand.



A tip offers suggestions for using the feature being discussed.



Warnings contain important information that can help you avoid possible damage to your equipment, your data, or yourself.

The Heart of Your MIDI Studio

If you have other MIDI instruments—hardware synths, samplers, or soft synths running on a computer—you can play their sounds from your MV-8800, using them alongside MV-8800 patches and audio phrases in your MV-8800 patterns and songs.



While this booklet explains making MIDI connections and the MV-8800's MIDI settings, it assumes you have a basic understanding of MIDI. To learn about MIDI, you can download *InFocus: An Introduction to MIDI* from the [Support Documents](#) section of the Roland US website.



Throughout this booklet, we'll refer to all external MIDI devices as simply "MIDI instruments" to make things easier to read.



To learn how to operate an external MIDI instrument or a computer/soft synth setup, see its documentation.

Listening to Your MIDI Instruments

You'll need a way to hear both the MV-8800 and your MIDI instruments when you want to use them together. There are basically two ways to do this. You can:

- *listen through a mixer*—by connecting the MV-8800 and the MIDI instruments to the mixer and listening to the mixer's output. (To learn how to set up a mixer, see its documentation.)
- *listen through the MV-8800*—if you're using the MV-8800 with a single MIDI instrument, or if you've connected multiple MIDI instruments to a mixer. We'll explain this option in detail in "Listening Through the MV-8800," next.



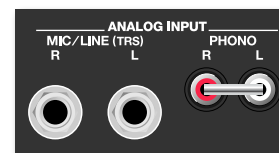
To find out how to get the best sound from a MIDI instrument, see its documentation.

Listening Through the MV-8800

Making a Direct Audio Connection

You can listen to a MIDI instrument—or a mixer—in stereo through the MV-8800 by connecting its:

- *analog stereo outputs*—to the MV-8800's L and R MIC/LINE jacks.



When you're not using the PHONO jacks, keep the included shorting pin inserted in them.

- *digital output*—to a digital input on an optional MV8-OP1 Audio I/O Expansion board (purchased separately) installed in your MV-8800.



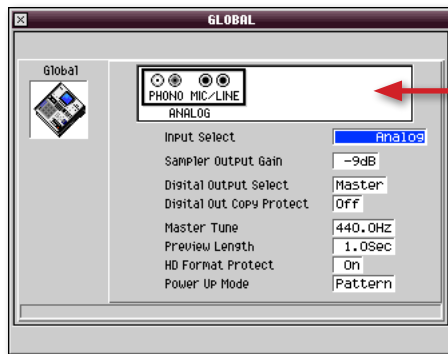
In addition to simplicity, there's another advantage to listening directly through the MV-8800: If you decide to sample your MIDI instrument(s), you're already set up to do so.

Selecting the MV-8800 Input(s) You're Using

- 1 Press the MV-8800's SYSTEM button.
- 2 Select Global from the SYSTEM menu to display the GLOBAL window.



Whenever you want to select a numbered menu item—such as the Global menu item—you can select it by pressing its number on the MV-8800's numeric keypad and hitting ENTER.

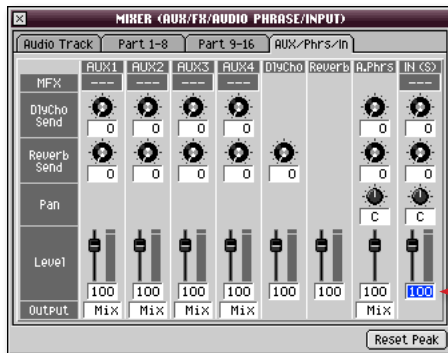


If you've installed an optional MV8-OP1 expansion board, you'll see its digital connectors here.

- 3 Set the Input Select parameter to Analog, unless you've installed an MV8-OP1—if you have, you can also select the Coaxial, Optical, or R-BUS digital input.

Setting The MIDI Instrument's Listening Level

- 1 Press the MV-8800 MIXER button to display the MIXER (AUX/FX/AUDIO PHRASE/INPUT) window.



IN (A) level



If the AUX/Phrs/In pane isn't visible—as shown here—click its tab at the top of the window to bring it forward.

- 2 Set the IN (A) fader's level to 100, as shown above.

- 3 If you're using the analog inputs, listen to your MIDI instrument and adjust the SENS knob for each input so that the level shown in the IN (A) level meter onscreen is as loud as possible without lighting its red Clip indicators.



Typically, you'll set the L and R SENS knobs to the same position.

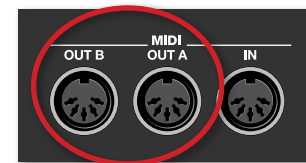


Once they light, the Clip indicators stay lit to make sure you see your volume's too high. To unlight them, click the Reset Peak button.

Connecting the MV-8800 to Other MIDI Devices

About the MV-8800's Two MIDI OUT Jacks

The MV-8800 has two MIDI OUT jacks on its rear panel: MIDI OUT A and MIDI OUT B.



Each MIDI OUT jack can transmit MIDI data on 16 MIDI channels, allowing you to play 16 individual MIDI sounds.

Since each jack has its own set of 16 MIDI channels, together they allow you to play and control up to 32 individual MIDI instrument sounds.



Add a third MIDI OUT, as well as a second MIDI IN jack, by connecting a Roland DIF-AT24—purchased separately—to an installed MV8-OP1.

MIDI Connection Options



To make MIDI connections, you'll need a MIDI cable—purchased separately—for each MIDI instrument you plan to use.

- You can connect the MV-8800 directly to one or two MIDI instruments—Connect one of the MV-8800 MIDI OUT jacks to the MIDI IN jack on each MIDI instrument.

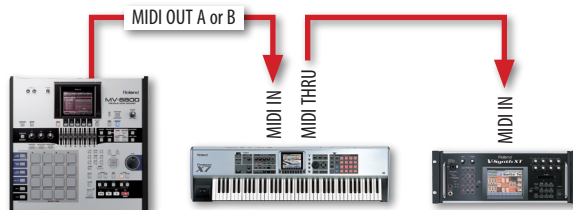


You can use either MV-8800 MIDI OUT jack for a single MIDI instrument. If you're using two, use either MIDI OUT jack for either instrument.



You can use a MIDI keyboard for sequencing on the MV-8800 by connecting its MIDI OUT jack to the MV-8800's MIDI IN jack.

- You can “daisy-chain” MIDI instruments—If a MIDI instrument has a MIDI THRU jack, it can pass the MIDI data it receives from the MV-8800 to the MIDI IN jack of another MIDI instrument. This lets you connect several MIDI instruments, one-after-another, to either MV-8800 MIDI OUT jack.



Each instrument in a MIDI daisy-chain gets its data a bit later than the one before it. Keep your MIDI rhythm sounds tight by placing their instruments as close as possible to the beginning of the daisy-chain.

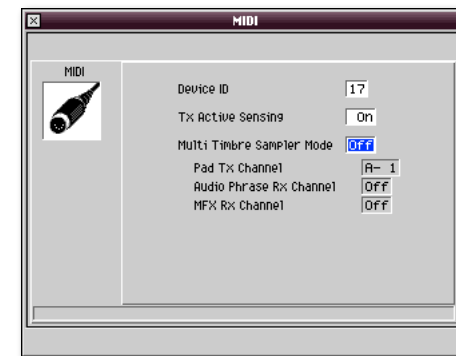
Using MIDI Instruments in a Sequence

Pads, Plus

For recording sequencer tracks, you can use the MV-8800's pads and/or a MIDI controller—such as a MIDI keyboard with or without its own sounds—connected to the MV-8800's MIDI IN jack.

Preparing the MV-8800 for MIDI Sequencing

- 1 Press the SYSTEM button to display the SYSTEM menu.
- 2 Select MIDI to open the MIDI window.



- 3 Make sure Multi Timbre Sampler Mode is set to Off as shown above. This accomplishes two things. With this parameter off:
 - The MV-8800's pads and a MIDI keyboard connected to the MV-8800's MIDI IN jack play the MIDI sound controlled by the currently selected sequencer track.
 - As you play a MIDI instrument from the MV-8800's pads or a connected MIDI keyboard, you can also record your playing into the MV-8800's sequencer.

Setting Up the MIDI Instrument



On each MIDI instrument you'll be using, you'll need to select the desired sound, or sounds. If you're using a:

- *single-sound MIDI instrument*—choose the sound you want the MV-8800's pads to play.
- *drum machine*—select the drum or percussion kit you want the MV-8800's pads to play.
- *multitimbral MIDI instrument*—set up the instrument's parts so that they play the desired sounds, and so that each part receives MIDI data on the correct MIDI channel.



A multitimbral MIDI instrument can play multiple sounds on separate MIDI channels. The instrument is typically divided into “parts,” with each playing its own sound on its own MIDI channel.



The MV-8800 can select sounds in a MIDI instrument automatically as the sequencer plays using MIDI Program Change messages. To learn more, see “Editing events individually” in the *MV-8800 Owner's Manual*.

If Your MIDI Instrument Has a Keyboard

To use a keyboard with its own sounds for MV-8800 sequencing, *only* the MV-8800 should actually play those sounds—you don't want each note to sound twice. Check the keyboard's manual to learn how to temporarily disable the playing of its sounds from the keyboard. (In the Roland Juno-D shown above, for example, you'd turn off the Local Control parameter.)

Choosing MIDI Instrument MIDI Channels

Here are some things to keep in mind as you set up your MIDI instrument(s):

- If you're using both of the MV-8800's MIDI OUT jacks, you've really got 32 completely separate MIDI channels to choose from. Get used to thinking of these as A 1-16 and B 1-16 when you assign MIDI channels to the sounds you want to play.
- In order for an MV-8800 sequencer track to play a MIDI sound, its track has to be set up to send out MIDI data on the sound's MIDI channel. When you set up your MIDI instrument(s), keep track of each sound's MIDI channel since you'll need this information later when you set up its track on the MV-8800.
- Normally, each MIDI channel controls a single sound or drum/percussion kit in a MIDI instrument. Therefore, set each sound—whether it's the only sound played by a MIDI instrument, or a part in a multitimbral MIDI instrument—to its own unique MIDI channel.



If you want to layer two or more MIDI sounds so that they play exactly the same thing, you *can* play them from the same MV-8800 sequencer track by setting them to respond to the same MIDI channel.

Preparing to Record a MIDI Instrument Track

The MV-8800 sequencer has two types of tracks:

- *audio tracks*—play onboard audio phrases.
- *MIDI tracks*—play MV-8800 patches and/or sounds in MIDI instruments.

When you want to sequence a MIDI instrument's sound, use a MIDI track. You can identify a MIDI track in a song by the note icon to the left of its name.





A MIDI track can play an internal MV-8800 patch and a MIDI instrument sound at the same time. You'll see how to do this in "Setting up a MIDI Instrument Track" below.

When you create a new project using the default settings, the song the MV-8800 automatically loads contains four MIDI tracks, and the current pattern has one MIDI track. Likewise, when you create a new song using the default settings, the song has four MIDI tracks, and its default pattern has one.

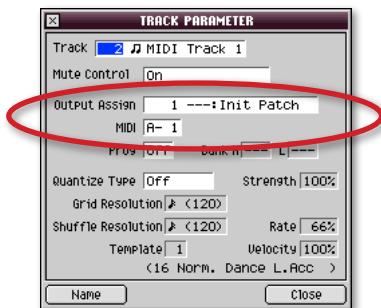
If your pattern or song has no MIDI tracks, or if you've used all the MIDI tracks it has, you can easily create new ones, as we'll see.

Setting Up a MIDI Instrument Track

Whether you want to work with a MIDI track that already exists, or you want to add a new MIDI track, you'll use the same two settings to set up the track for playing a MIDI instrument. These are the Output Assign and MIDI parameters.

To set up a MIDI track that already exists:

- 1 Press PATTERN or SONG to display the desired screen.
- 2 Select the MIDI track you want to use by pressing the ▼ or ▲ buttons to highlight it. (If you're using a VGA, you can also select it by clicking its name.)
- 3 Click Track Param to open the TRACK PARAMETER window where you'll find the two parameters.



When you're creating a new MIDI track:

- 1 Press PATTERN or SONG to display the desired screen.
- 2 Press the MENU button.
- 3 Select Add MIDI Tracks... to open the ADD MIDI TRACK window where you'll see the two parameters we're concerned with.



Tell the MV-8800 how many new MIDI tracks you want to add by setting the Number of Tracks parameter at the top of the window.

The Output Assign Parameter

The setting of the Output Assign parameter decides whether or not the track's notes get sent to an MV-8800 part in order to play its patch.



To learn about parts and patches, see "About Patch Loading" on Page 3 in the MV-8800 *Loading Patches* Workshop booklet.

You can set Output Assign to Off, or set it to the part whose patch you want the MIDI track to play.



When you want the track to play *only* a MIDI instrument, set Output Assign to Off.

The MIDI Parameter

The MIDI parameter selects the MIDI channel that carries the track's data to its MIDI sound. Set it to the MIDI channel you selected for the sound when you set up its MIDI instrument. You can set MIDI to:

- *Off*—so that the track sends out no MIDI data.
- *A-1 through A-16*—so that the track's data is sent on one of the 16 MIDI channels coming out of the MIDI OUT A jack.
- *B-1 through B-16*—so that the track's data is sent on one of the 16 MIDI channels coming out of the MIDI OUT B jack.



Once you've set the MIDI parameter, we recommend naming your track to avoid confusing it with other tracks. Click Name to open the EDIT TRACK NAME window where you can name the track.

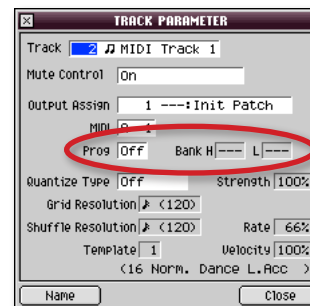
Automatic MIDI Instrument Patch Selection

A MIDI instrument's track can automatically select the desired sound when you start playback of an MV-8800 pattern or song from the top. It does this by sending the MIDI instrument the required Program Change and Bank Select MIDI messages. Here's how to set this up.



Before proceeding, see the MIDI instrument's documentation to learn the Program Change and Bank Select messages for the sound you want to select from the MV-8800.

- 1 Press PATTERN or SONG to display the desired screen.
- 2 Select the desired MIDI track by clicking its name. (If you're using the internal LCD, select the desired MIDI track by pressing the ▼ or ▲ buttons to highlight it.)
- 3 Click Track Param to open the TRACK PARAMETER window.



You select an external patch with the Prog and Bank. H and L parameters.

- 4 Set:
 - *Prog*—to the desired sound's Program Change value.
 - *Bank H*—the the desired sound's MSB value.
 - *Bank L*—the the desired sound's LSB value.



You can set up other MIDI tracks the same way by selecting them using the Track parameter in this window, and then setting their parameters as desired.

- 5 When you're done, click Close.

Ready to Go

That's it. At this point you can record your MIDI instrument track the same way you'd record a track that plays an MV-8800 patch. To learn about sequencing on the MV-8800, see the *MV-8800 Owner's Manual*.

The End

We hope you've found this workshop helpful. Keep an eye out for other MV-8800 Workshop booklets, all available for downloading at www.RolandUS.com.



For the latest MV-8800 updates and support tools, visit the Roland U.S. Web site at www.RolandUS.com. If you need personal assistance, call our amazing Product Support team at 323-890-3745.