

MV-8800 Production Studio



Importing a Sample from CD

© 2007 Roland Corporation U.S.

All rights reserved. No part of this publication may be reproduced in any form without the written permission of Roland Corporation U.S.

MV8800WS05

About the MV-8800 Workshop Series

Roland's MV-8800 Production Studio is packed with features for making music. It's a heavy-duty sampler that can do all sorts of things with sounds you sample or import. Its sequencer has 136 tracks for MIDI sequencing and playing back audio, and its set of editing tools is deep. It's a great box for performing—using its pads or an attached MIDI keyboard—and, of course, it can even burn a CD of your final master mix.

Each MV-8800 Workshop Series booklet focuses on one MV-8800 topic, and is intended as a companion to your *MV-8800 Owner's Manuals*.

About This Booklet

Lots of great samples can be found on CDs, and it's easy to import them into the MV-8800 for use as audio phrases or patches. This booklet explains how to do this.



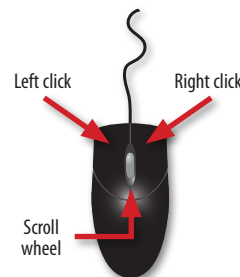
The Buttons, the LCD, or a VGA?

On the MV-8800, you can work on the built-in color LCD or on an optional VGA monitor. You can use the MV-8800's front-panel controls, or a mouse on your VGA screen. No matter how you like to work, there's an easy way to get things done.

Probably the best idea is to work primarily with a mouse on a VGA, using the MV-8800's buttons to quickly get in and out of MV-8800 screens. The procedures in this booklet typically assume you'll be working this way.

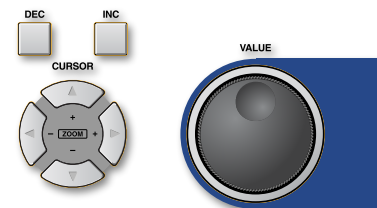
If you're not, don't worry, because the VGA windows and LCD screens are essentially the same. There are clickable VGA icons for all of the MV-8800's buttons. You can also press an onscreen button by clicking your mouse or by pressing an F button on the MV-8800. The main difference has to do with how you deal with settings—or "parameters"—and how you select objects.

If you're using a mouse:



You select parameters and objects with a left click. You change the selected parameter's value by turning the scroll wheel. You can display an object's menu by right-clicking the object.

If you're using the MV-8800's buttons:



You select parameters and objects with the ◀, ▶, ▲, and ▼ CURSOR buttons. Change a selected parameter's value by turning the VALUE dial or by pressing DEC and INC.

Understanding the Symbols in This Booklet

Throughout this booklet, you'll come across information that deserves special attention—that's the reason it's labeled with one of the following symbols.



A note is something that adds information about the topic at hand.



A tip offers suggestions for using the feature being discussed.



Warnings contain important information that can help you avoid possible damage to your equipment, your data, or yourself.

Hot Links

Each Workshop booklet is meant to be read in order from beginning to end. However, if we mention an upcoming section—and you see this arrow—you can click the arrow to jump there immediately.



What We'll Get Into Here

This booklet describes the process of importing audio from a CD into the MV-8800 as a sample. Once you've got your sample, other MV-8800 Workshop booklets can tell you how to:

- *use a sample as an audio phrase*—See the MV-8800 *Sampling Workshop* booklet, and start reading at the section called “What You See Is What You Got” on Page 8.
- *use a single sample in a patch*—See the MV-8800 *Sampling Workshop* booklet, and start reading at the section called “What You See Is What You Got” on Page 8.
- *chop up a sample containing multiple sounds*—See the MV-8800 *Auto Chop Workshop* booklet, and start reading at the section called “Using Auto Chop” on Page 3.
- *spread a sample across a range of pads*—See the MV-8800 *Spreading a Sample Across the Pads Workshop* booklet, and start reading at “Planting the Root” on Page 4. (If you don't yet know the note your imported sample plays, start reading at the top of Page 3 of that booklet.)

Importing from an Audio CD

- 1 Insert the desired CD into the MV-8800.

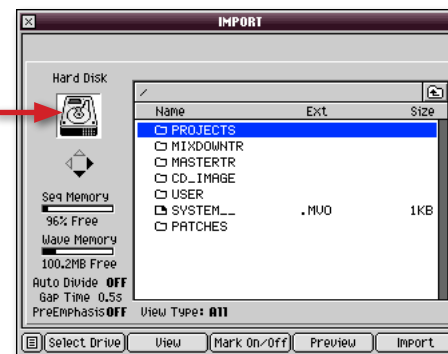


To learn how to operate the MV-8800's CD tray, see the *MV-8800 Owner's Manual*.

- 2 When the CD drive's disk access indicator stops flashing, press the IMPORT button to display the IMPORT window.



The currently selected drive.



What Kind of CD Do You Have?

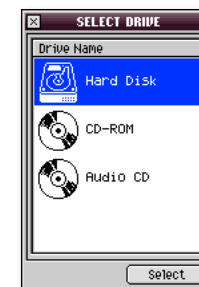
Though they look the same, there are two types of CDs that hold audio you can bring into the MV-8800. You may have:

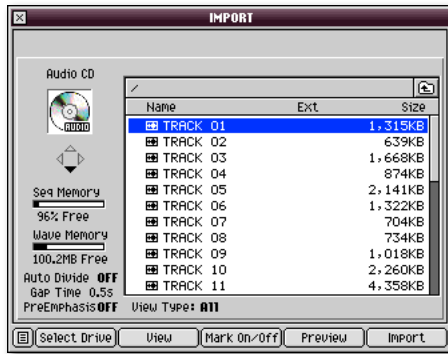
- *an audio CD*—you can play on any standard CD player. Most sampling CDs are audio CDs that contain short sound clips. Standard music CDs are also audio CDs.
- *a CD-ROM*—you can use only on a computer or computer-based device such as the MV-8800. CD-ROMs typically contain computer sound files in .WAV or AIFF format. The MV-8800 imports .WAV and AIFF files that use a 44.1 kHz sampling rate.

We'll cover importing from the two types of CDs separately, since the operations are slightly different. We'll start with audio CDs—if you've got a CD-ROM, click the button here to jump there now.



- 3 In the upper left-hand corner of the IMPORT window, you can see a picture of the currently selected drive, as shown above. If you see anything other than “Audio CD” above this little picture, click Select Drive to display a list of the available drives.
- 4 Choose “Audio CD” in the list and click Select to display a list of the audio selections on your CD, as shown on the next page.





To audition any item in the list, select it and click Preview. Click Stop to stop playback.



If the list is empty, click the onscreen View button at the bottom of the window and make sure it's set to All or Sample.

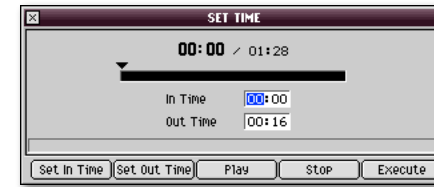
5 To import:

- *one item in the list*—select it and click Import.
- *multiple items in the list*—select each one and click Mark On/Off to checkmark it (click Mark On/Off again to un-checkmark an item if you want to). Once everything you want to grab is checkmarked, click Import.

If you're importing a single item, the MV-8800 displays the SET TIME window, where you can choose to import all of the selected item, or just part of it, by setting its In Time and Out Time parameters.



If you're importing multiple items, the entire selections are imported automatically and displayed in the RESULTS window. This window's operation is explained in "What You See Is What You Got" on Page 8 in the MV-8800 *Sampling Workshop* booklet.



6 In the SET TIME window, set:

- *In Time*—to the beginning of the audio to be imported, with 00:00 being the very start of the selection.
- *Out Time*—to the end of the audio to be imported. (The MV-8800 won't let you set this beyond the actual end of the selection.)



The In and Out Time parameters are set by default to grab the entire audio selection.



You can also set the In and Out Time parameters on-the-fly. Click Play, and then click the Set In Time and Set Out Time buttons at the desired start and stop time locations, respectively. Click Stop to end playback.

7 When you're ready, click Execute to finish importing the audio. The new sample appears in the RESULT window.



The RESULT window's operation is explained in "What You See Is What You Got" on Page 8 in the MV-8800 *Sampling Workshop* booklet.

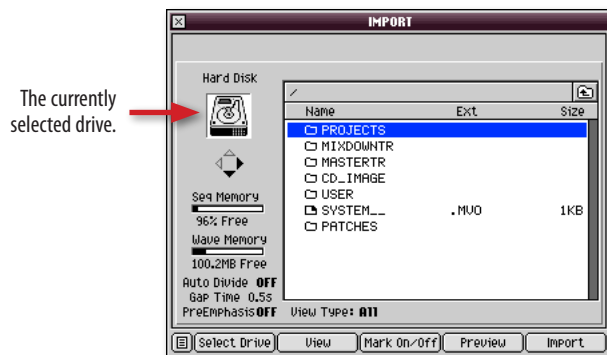
Importing from a CD-ROM

- 1 Insert the desired CD-ROM into the MV-8800.

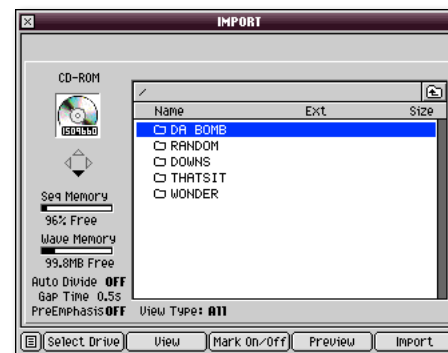
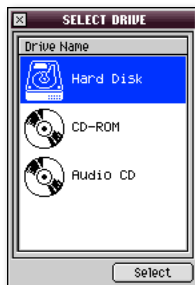


To learn how to operate the MV-8800's CD tray, see the *MV-8800 Owner's Manual*.

- 2 When the CD-ROM's drive's disk access indicator stops flashing, press the IMPORT button to display the IMPORT window.



- 3 In the upper left-hand corner of the IMPORT window, you can see a picture of the currently selected drive, as shown above. If you see anything other than "CD-ROM" above this little picture, click Select Drive to display a list of the available drives.
- 4 Choose "CD-ROM" in the list and click Select to display the contents of the CD-ROM. If you see a list of folders, as shown in the next illustration, double-click any folder to see what's inside it.

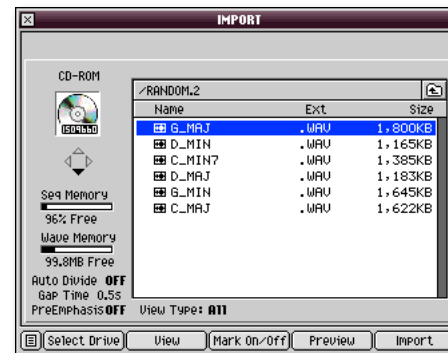


If you open a folder and find that it contains other folders, keep opening folders until you locate what you want. To move back up and out of a folder, press the ◀ button on the MV-8800, or click the Up Cursor icon, shown here.



Since CD-ROMs can hold all sorts of files, click View at the bottom of the window, and then select Sample. Click Set to hide everything other than audio files. This can make it easier to find what you want.

Here's what a list of files looks like.



To audition any item in the list, select it and click Preview. Click Stop to stop playback.

5 To import:

- *one item in the list*—select it and click Import.
- *multiple items in the list*—select each one and click Mark On/Off to checkmark it (click again to un-checkmark an item if you want to). Once everything you want to grab is checkmarked, click Import.

The imported audio appears as a sample in the RESULT window—if you’ve imported multiple files, they’re displayed in the RESULTS window.



To learn what to do in a RESULT(S) window, see “What You See Is What You Got” on Page 8 in the MV-8800 *Sampling* Workshop booklet.

The End

We hope you’ve found this workshop helpful. Keep an eye out for other MV-8800 Workshop booklets, all available for downloading at www.RolandUS.com.



For the latest MV-8800 updates and support tools, visit the Roland U.S. Web site at www.RolandUS.com. If you need personal assistance, call our amazing Product Support team at 323-890-3745.